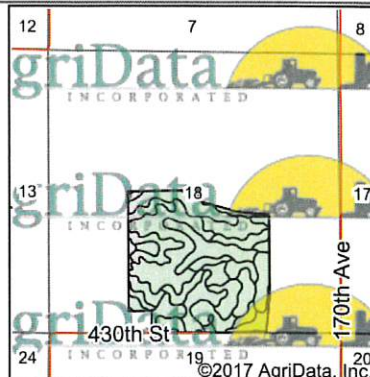
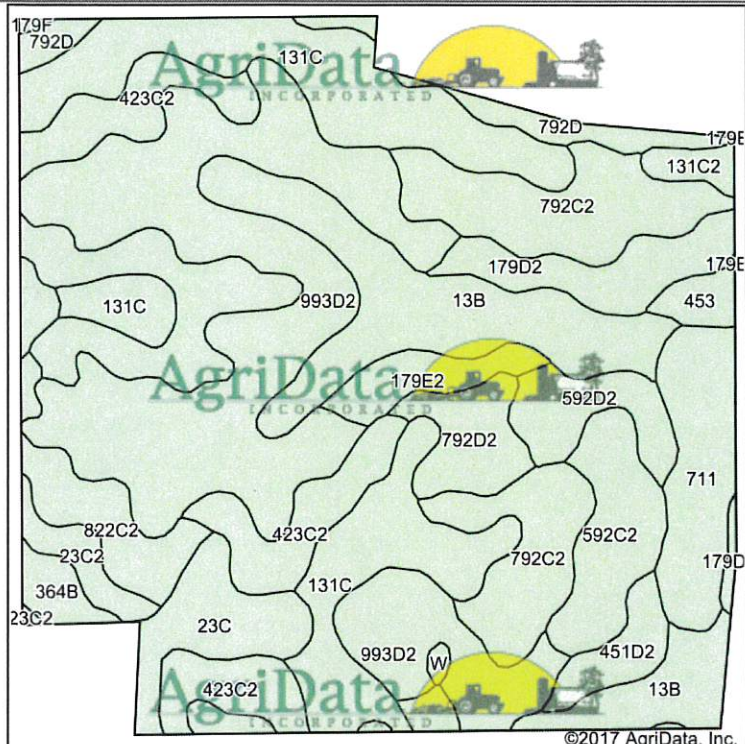


Soils Map



State: **Iowa**
 County: **Lucas**
 Location: **18-71N-22W**
 Township: **Warren**
 Acres: **144.55**
 Date: **10/20/2017**

Maps Provided By:

 CUSTOMIZED ONLINE MAPPING
 © AgriData, Inc. 2017 www.AgriDataInc.com



Soils data provided by USDA and NRCS.

Area Symbol: IA117, Soil Area Version: 24

Code	Soil Description	Acres	Percent of field	Non-Irr Class *c	CSR2**	CSR
993D2	Gara-Armstrong complex, 9 to 14 percent slopes, moderately eroded	33.06	22.9%	IVe	32	31
131C	Pershing silt loam, 5 to 9 percent slopes	20.19	14.0%	IIIe	65	49
423C2	Bucknell silty clay loam, 5 to 9 percent slopes, moderately eroded	17.82	12.3%	IIIe	34	27
13B	Zook-Olmitz-Vesser complex, 0 to 5 percent slopes	14.90	10.3%	IIw	68	53
792C2	Armstrong clay loam, 5 to 9 percent slopes, moderately eroded	12.91	8.9%	IIIe	24	27
711	Lawson-Nodaway-Colo complex, 0 to 2 percent slopes, occasionally flooded	6.23	4.3%	IIw	83	87
592C2	Mystic clay loam, 5 to 9 percent slopes, moderately eroded	5.21	3.6%	IIIe	23	20
179D2	Gara clay loam, 9 to 14 percent slopes, moderately eroded	4.68	3.2%	IVe	45	43
23C	Arispe silty clay loam, 5 to 9 percent slopes	4.51	3.1%	IIIe	66	55
822C2	Lamoni silty clay loam, 5 to 9 percent slopes, moderately eroded	4.08	2.8%	IIIe	36	30
592D2	Mystic clay loam, 9 to 14 percent slopes, moderately eroded	3.43	2.4%	IVe	24	5
792D2	Armstrong clay loam, 9 to 14 percent slopes, moderately eroded	3.39	2.3%	IVe	5	13
792D	Armstrong loam, 9 to 14 percent slopes	2.97	2.1%	IVe	28	18
179E2	Gara clay loam, 14 to 18 percent slopes, moderately eroded	2.56	1.8%	VIe	23	33
23C2	Arispe silty clay loam, 5 to 9 percent slopes, moderately eroded	2.55	1.8%	IIIe	62	50
451D2	Caleb loam, 9 to 14 percent slopes, moderately eroded	2.21	1.5%	IVe	41	33
364B	Grundy silty clay loam, 2 to 5 percent slopes	1.36	0.9%	IIe	72	75
453	Tuskeego silt loam, 0 to 2 percent slopes, rarely flooded	1.16	0.8%		0	53
131C2	Pershing silty clay loam, 5 to 9 percent slopes, moderately eroded	1.01	0.7%	IIIe	62	45
W	Water	0.22	0.2%		0	0
179F	Gara loam, 18 to 25 percent slopes	0.10	0.1%	VIe	19	15
Weighted Average					43.2	37.8

**IA has updated the CSR values for each county to CSR2.

*c: Using Capabilities Class Dominant Condition Aggregation Method

Soils data provided by USDA and NRCS.